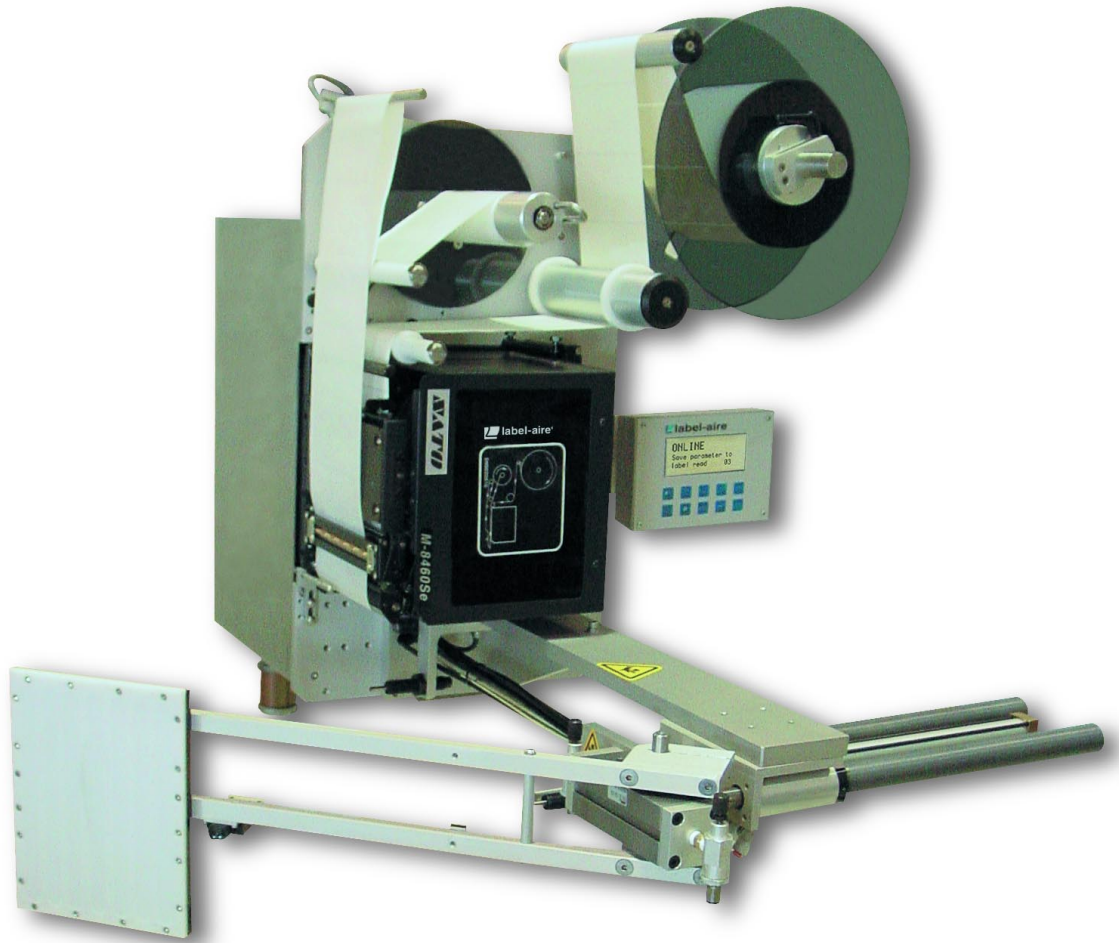


Model 3138-N



3138-N Dual Action Tamp

Printer Applicator

DAT

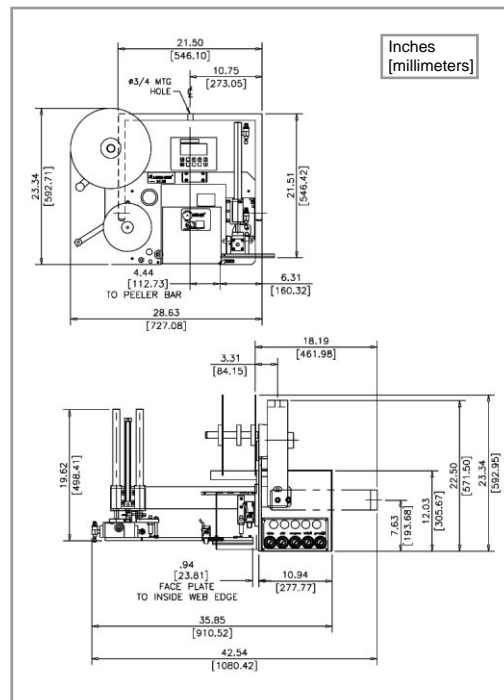
3138-N Dual Action Tamp Printer Applicator Specifications

The Label-Aire® Model 3138-N Dual Action Tamp (DAT) Printer Applicator makes dual panel labeling even easier.

The Model 3138-N DAT showcases the latest in dual panel labeling. Featuring Label-Aire's renowned New Generation technology, the 3138-N DAT is the ideal choice for the most demanding print and apply applications. The heavy duty dual action air cylinder tamp rotates 90° across the conveyor to apply the first printed label. The second straight line stroke extends applying the second label onto the side panel.

Advanced features found in our standard 3138-N Printer Applicator include automatic setup, an enhanced two-line digital display with full-error messaging, multiple programmable label pages for easy change-overs to labels of different sizes, rate compensation for improved label accuracy, and advanced user-configurable I/O connectivity. These helpful features greatly simplify setup and change-overs making labeling easier. The workhorse 3138-N Dual Action Tamp is just as rugged as it is advanced and user-friendly. Its tough stainless steel and anodized aluminum construction is corrosion resistant for long-term durability and maintenance-free operation in the most hostile environments.

Put this advanced workhorse dual panel printer applicator to work for you 24/7. The Model 3138-N DAT Printer Applicator is designed to run seamlessly in your operation, saving you money in the long run.



Dimensions:

Height: 23.3" (592 mm)
Length: 28.6" (727 mm)
Width: 35.9" (911 mm)

Weight:

165 lbs. (75 kg) not including the printer

Standard Label Dimensions:

Label Width: Up to 7.2" (183 mm)
Label Length: Up to 7" (178 mm)
(Printer dependent)

Dispense Speed:

Up to 16" (406 mm) per second depending on printer and label size

Label Placement Accuracy:

+/- 1/32" (.8 mm)

Electrical:

115 Volts AC 60 Hz 5 Amps.
220 Volts AC 50 Hz 5 Amps.

Air:

4 cfm at 90 psi for most applications

Options:

All O.E.M. print engines
17" (432 mm) powered unwind configuration
Consult factory for additional options.

3138-N DAT Advanced Features

Heavy duty dual action air cylinder	90° rotation and straight line extension dual panel labeling with 24/7 reliability.
Automatic setup	Includes multiple programmable label pages for easy change-overs to different label sizes.
Digital display	Remote operator control capability.
Flash memory	Allows easy download of system software updates.
Rate compensation	For improved label placement accuracy.
Advanced I/O	User-configurable for system output.



Headquarters

550 Burning Tree Road
Fullerton, CA 92833 USA

o 714.441.0700
f 714.526.0300
e info@label-aire.com
w www.label-aire.com

Europe

Sjaellandsvej 27A
DK-9500 Hobro, Denmark

o +45 9657 0063
f +45 9657 0064
e info@label-aire.com
w www.label-aire.com

Distributed by:

U. S. TAPE & LABEL
2092 WESTPORT CENTER DRIVE
ST. LOUIS, MO 63146
(800) 569-1906