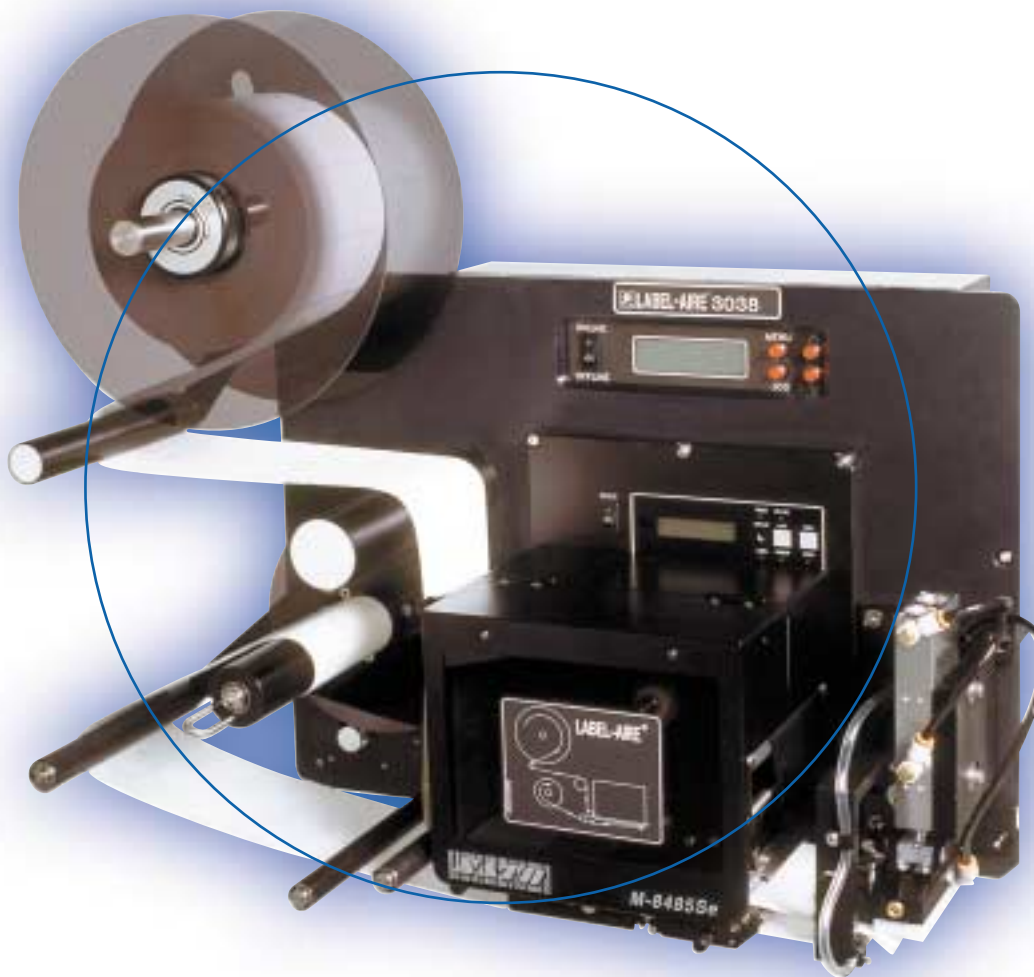


3038

 LABEL-AIRE®

Model 3038 Printer Applicator



precision

LABEL-AIRE®... LABELING SOLUTIONS THAT APPLY™

Model 3038 Printer Applicator

The Model 3038 is Label-Aire's newest standard line printer applicator for tough labeling jobs.

The Model 3038 is Label-Aire's standard line printer applicator featuring a host of advancements such as enhanced **two-line digital display** with **full error messaging**, **user programmable PLC outputs**, standard velocity compensation with **optional encoder** which results in accurate label placement through changes in product velocity, and **multi-page memory** (for saving setup parameters). All these handy features greatly simplify setup and changeovers. The 3038's tough corrosion resistant, stainless steel, and anodized aluminum construction provides **durability** and **maintenance-free** operation for the most demanding applications.

- **Velocity compensation** with **optional encoder** results in accurate label placement through changes in product velocity.
- Enhanced **two-line digital display** with **full error messaging** for added convenience.
- Standard stepper rewind for waste take up.
- Compatible with any O.E.M. printer on the market.
- Standard 12" (305 mm) unwind.
- Available in either **domestic** or **CE** (European) configurations.
- Standard "end of label/ribbon" and "low ribbon" strobe signals. "Low label" available.
- Applies labels to the top, side, or bottom of products for added versatility.
- Available in a **variety of stroke lengths**.



550 Burning Tree Road
Fullerton, CA 92833 USA
v: 714-441-0700 f: 714-526-0300

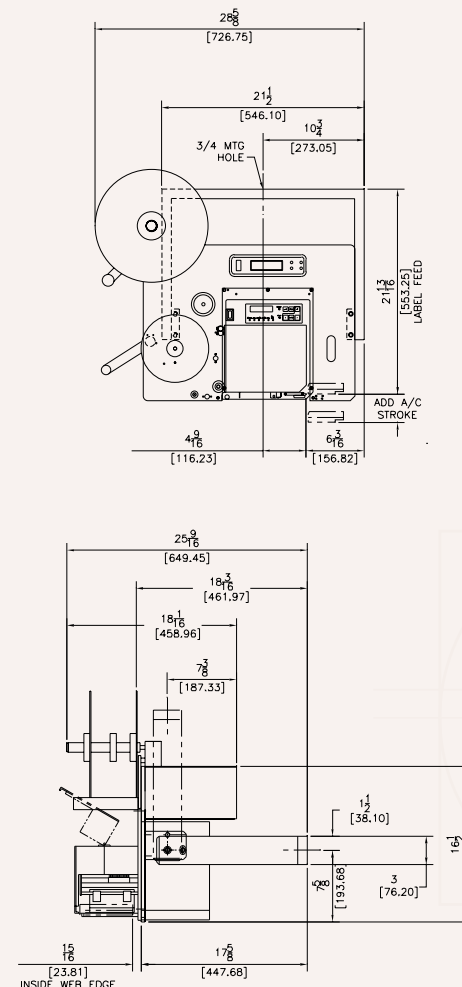
Sjaellandsvej 27 A
Hobro, DK-9500 Denmark
v: 45 96 57 00 63 f: 45 96 57 00 64

e: info@label-aire.com
i: www.label-aire.com

Distributed by:

U. S. TAPE & LABEL
2092 WESTPORT CENTER DRIVE
ST. LOUIS, MO 63146
(800) 569-1906

i M P A X X
THE COMPLETE PACKAGE
MACHINE SYSTEMS



S P E C S

Dimensions:

Height: 21.8" (554 mm)
Length: 28.6" (726 mm)
Width: 25.6" (650 mm)

Weight:

160 lbs. (75 kg)

Standard Label Dimensions:

Label Width: Up to 7.2" (183 mm)
Label Length: Up to 7" (178 mm)
(Printer dependent)

Dispense Speed:

Up to 12" (305 mm) per second
depending on printer and label
size

Label Placement Accuracy:

+/- 1/32" (.8 mm)

Electrical:

115 Volts AC 60 Hz, 5 Amps.
220 Volts AC, 50 Hz, 5 Amps.

Air:

4 cfm at 90 psi for most applications

Options:

All O.E.M. print engines
Label on pad detection
(Consult factory for additional
options.)

Label-Aire also provides a full range of rotary & inline systems, label applicators, printer applicators, and custom systems to meet your toughest labeling requirements.