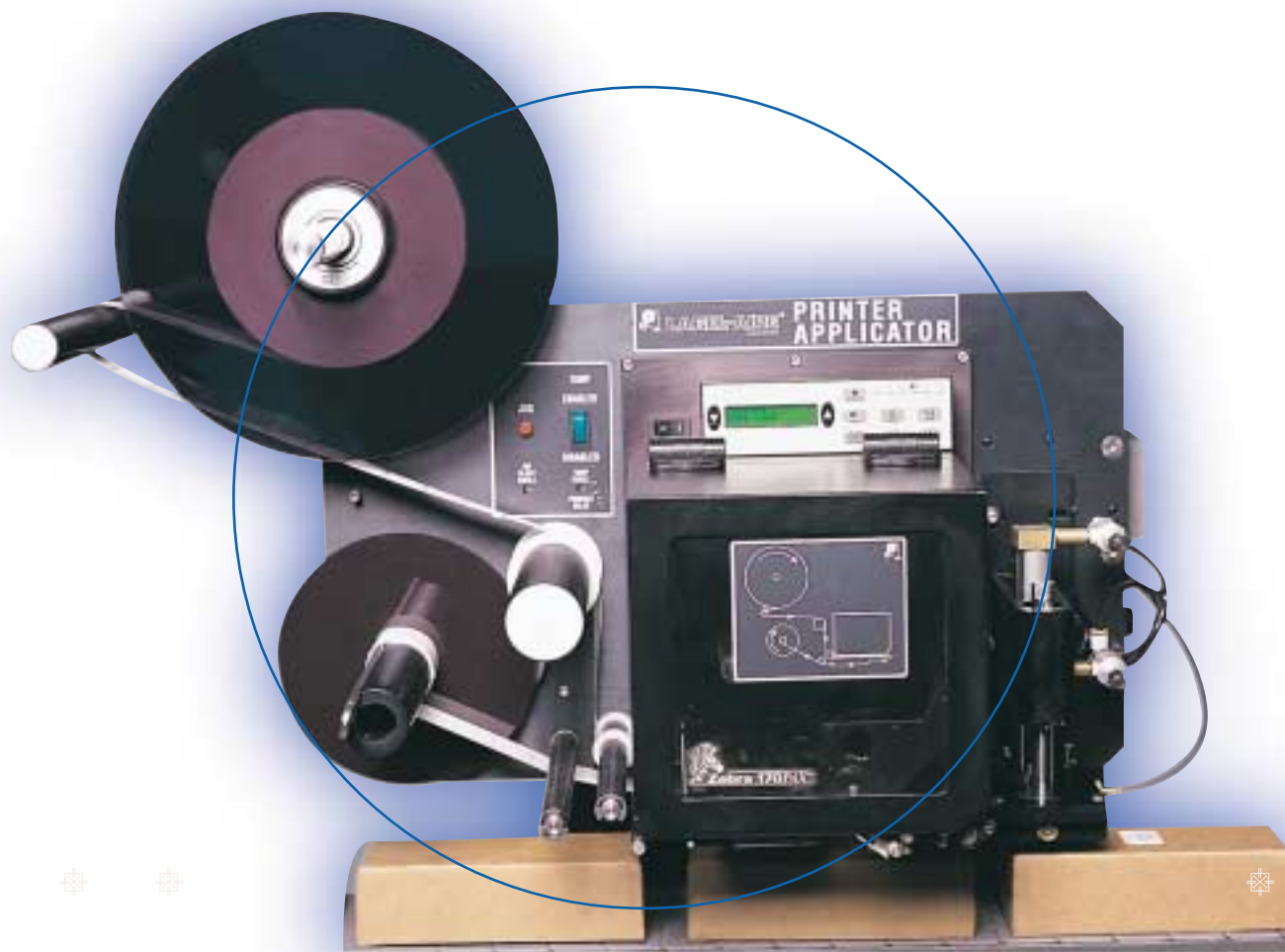


2138

 LABEL-AIRE®

Model 2138 Printer Applicator



precision

LABEL-AIRE®... LABELING SOLUTIONS THAT APPLY™

# Model 2138 Printer Applicator

The Model 2138's list of standard features and many options make this a truly reliable and versatile printer applicator.

Label-Aire's workhorse Model 2138 Printer Applicator imprints and applies labels utilizing tamp-blow or air-blow technology to handle the toughest labeling jobs. This model is very easy to use and comes in a variety of configurations such including the Dual Action Tamp for added versatility. The 2138 can handle a wide variety of print sizes and can print bar codes on the same label. Its one-to-one print and apply capability allows for the immediate application of each label as it is printed. Just as tough as it is simple to use, the 2138's rugged corrosion resistant, stainless steel and anodized aluminum construction provides long-lasting durability and maintenance free operation in the most hostile environments.

- Rugged construction for lasting reliability and seamless operation.
- Compatible with any O.E.M. printer on the market.
- Available Dual Action Tamp reduces label and ribbon costs for two panel corner labeling.
- Standard 12" (305 mm) unwind.
- Available in either CD (domestic) or CE (European) configurations.
- Standard "end of label/ribbon" and "low label/ribbon" signals with strobe.



550 Burning Tree Road  
Fullerton, CA 92833 USA  
v: 714-441-0700 f: 714-526-0300

Sjaellandsvej 27 A  
Hobro, DK-9500 Denmark  
v: 45 96 57 00 63 f: 45 96 57 00 64

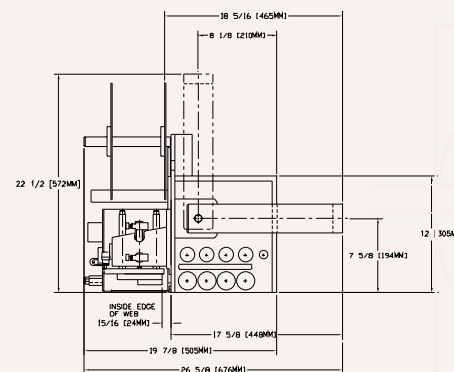
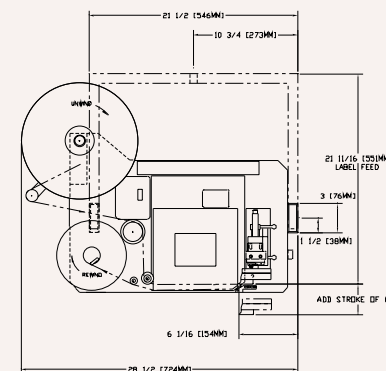
e: info@label-aire.com  
i: www.label-aire.com

Distributed by:

U. S. TAPE & LABEL  
2092 WESTPORT CENTER DRIVE  
ST. LOUIS, MO 63146  
(800) 569-1906

IMPAXX  
THE COMPLETE PACKAGE  
MACHINE SYSTEMS

Rev. A 7/02



## S P E C S

### Dimensions (Air-Blow):

Height: 22" (559 mm)  
Width: 25" (635 mm)  
Length: 32" (813 mm)

### Dimensions (Tamp-Blow):

Height: 23" (584 mm)  
Width: 26" (660 mm)  
Length: 29" (737 mm)  
(Printer dependent)

### Weight:

165 lbs. (75 kg) not including the printer

### Standard Label Dimensions:

Label Width: Up to 7.2" (183 mm)  
Label Length: Up to 7" (178 mm)

### Dispense Speed:

Up to 12" (305 mm) per second  
depending on printer and label size

### Label Placement Accuracy:

Up to +/- 1/32" (0.8 mm)

### Electrical:

115 Volts AC 60 Hz 5 Amps.  
220 Volts AC 50 Hz

### Air:

4 cfm at 90 psi to 100 psi for most applications

### Options:

All O.E.M. print engines  
17" (432 mm) powered unwind  
Label on pad detection  
90-degree swing tamp

Label-Aire also provides a full range of rotary & inline systems, label applicators, printer applicators, and custom systems to meet your toughest labeling requirements.